



VRU Package



BOM:VRUM25043BAAL0EH

VFD Package Specifications

Enclosure	NEMA 3R
Cooling Method	Air Cooled Filter Fans
Filtration	Replaceable
Input Voltage	460V +10%/-15% 3 Phase
Input Frequency	60 HZ
Min. Ambient Temp	-20F (-28C)
Panel Heater	Yes
Max. Ambient Temp	122F (50C)
Circuit Breaker Disconnect	LO/TO Compliant (Flanged)
Circuit Breaker Rating	600 A 35 KAIC Minimum
Line Side Reactor	3%
Surge Protection	UL 1449 40kA Surge Current
Control Power Transformer	1000VA
Display	5.7" OptiPressure Controller VFD Keypad
Control	HOA, E-stop, 4-20mA
Heating Method	800w heater
Auxiliary Starters	5HP Cooler Starter, 1HP Condensate Starter
Indicator Lights	4 Compressor Status Lights

VFD Chassis Specifications

Brand	Fuji
Model	FRN250G1S-4U
Horsepower	250HP
Amperage/Altitude	304A/1000m w/o Derate
Humidity	Non-Condensing, 95% Max.
Overload Capacity	120% for 1 Min
Output Frequency	0.1 to 400 Hz
Analog Inputs	(2) 0-10VDC, (1) 4-20mA
Analog Outputs	(2) 0-10VDC or 4-20mA
Digital Inputs	(7)
Digital Outputs	(2) Relays, (4) Transistor
Communication	Modbus TCP/RTU/IP
Standards	UL, cUL, CE Listed

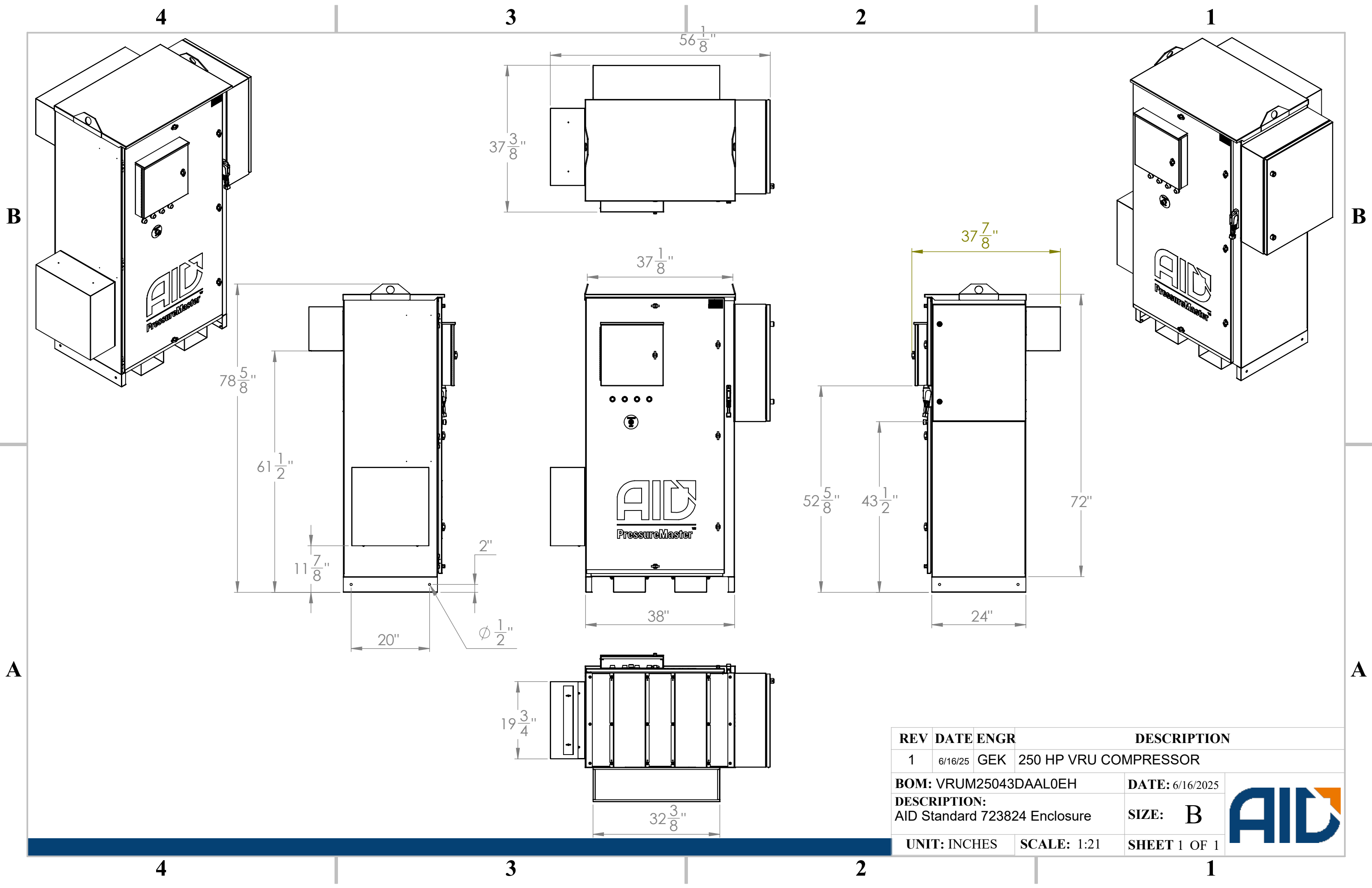
Enclosure Materials


Enclosure Material	Carbon Steel
Enclosure Paint Spec	Powder Coated
Enclosure Dimensions	72 X 38 X 24
Weight (lbs)	TBD

Available Package Options

Premium Surge Protection Device
UL 508A Listed
Floor Stand
Power Protection Circuit
DriveLynx (SCADA) & Remote Monitoring (ARCC)
Call to learn about other available options





REV	DATE	ENGR	DESCRIPTION	
1	6/16/25	GEK	250 HP VRU COMPRESSOR	
BOM: VRUM25043DAAL0EH			DATE: 6/16/2025	
DESCRIPTION: AID Standard 723824 Enclosure			SIZE: B	
UNIT: INCHES			SCALE: 1:21	
			SHEET 1 OF 1	