



Rod Lift Package



BOM: RLM03043BAAL0X0

VFD Package Specifications

Enclosure	NEMA 3R
Cooling Method	Air Cooled Filter Fans
Filtration	Replaceable
Input Voltage	460V +10%/-15% 3 Phase
Input Frequency	60 HZ
Min. Ambient Temp	-20F (-28C)
Panel Heater	Yes
Max. Ambient Temp	122F (50C)
Circuit Breaker Disconnect	LO/TO Compliant (Rotary)
Circuit Breaker Rating	60A 18 KAIC Minimum
Line Side Reactor	3%
Surge Protection	UL 1449 40kA Surge Current
Control Power Transformer	500VA
Display	5.7 OptiPump RL Controller VFD Keypad
Control	HOA, Speed Pot, Timer, Dynacard
Heating Method	200w Heater

VFD Chassis Specifications

Brand	Fuji
Model	FRN030G1S-4U
Horsepower	030HP
Amperage/Altitude	45A/1000m w/o Derate
Humidity	Non-Condensing, 95% Max.
Overload Capacity	120% for 1 Min
Output Frequency	0.1 to 400 Hz
Analog Inputs	(2) 0-10VDC, (1) 4-20mA
Analog Outputs	(2) 0-10VDC or 4-20mA
Digital Inputs	(7)
Digital Outputs	(2) Relays, (4) Transistor
Communication	Modbus TCP/RTU/IP

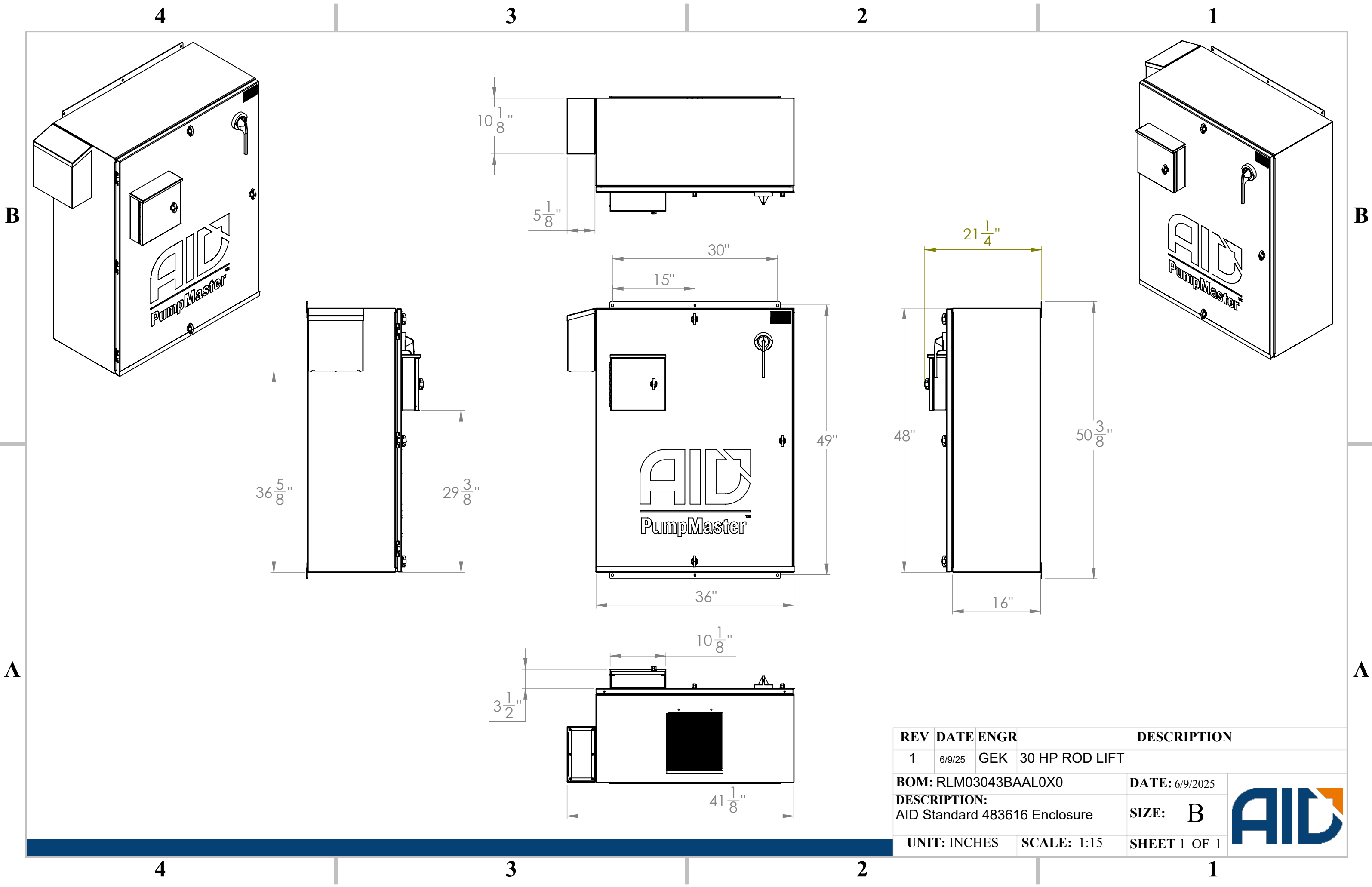
Enclosure Materials

Enclosure Material	Carbon Steel
Enclosure Paint Spec	Powder Coated
Enclosure Dimensions	48 X 36 X 16
Weight (lbs)	TBD

Available Package Options

Premium Surge Protection Device
Indicator Lights
UL 508A Listed
Power Protection Circuit
DriveLynx (SCADA) & Remote Monitoring (ARCC)
Floor Stand





REV	DATE	ENGR	DESCRIPTION
1	6/9/25	GEK	30 HP ROD LIFT
BOM: RLM03043BAAL0X0			DATE: 6/9/2025
DESCRIPTION: AID Standard 483616 Enclosure			SIZE: B
UNIT: INCHES		SCALE: 1:15	SHEET 1 OF 1

