



# Rod Lift Package



BOM: RLM10043BAAL0X0

## VFD Package Specifications

Enclosure	NEMA 3R
Cooling Method	Air Cooled Filter Fans
Filtration	Replaceable
Input Voltage	460V +10%/-15% 3 Phase
Input Frequency	60 HZ
Min. Ambient Temp	-20F (-28C)
Panel Heater	Yes
Max. Ambient Temp	122F (50C)
Circuit Breaker Disconnect	LO/TO Compliant (Rotary)
Circuit Breaker Rating	200A 35 KAIC Minimum
Line Side Reactor	3%
Surge Protection	UL 1449 40kA Surge Current
Control Power Transformer	500VA
Display	5.7 OptiPump RL Controller VFD Keypad
Control	HOA, Speed Pot, Timer, Dynacard
Heating Method	200w Heater

## VFD Chassis Specifications

Brand	Fuji
Model	FRN100G1S-4U
Horsepower	100HP
Amperage/Altitude	150A/1000m w/o Derate
Humidity	Non-Condensing, 95% Max.
Overload Capacity	120% for 1 Min
Output Frequency	0.1 to 400 Hz
Analog Inputs	(2) 0-10VDC, (1) 4-20mA
Analog Outputs	(2) 0-10VDC or 4-20mA
Digital Inputs	(7)
Digital Outputs	(2) Relays, (4) Transistor
Communication	Modbus TCP/RTU/IP

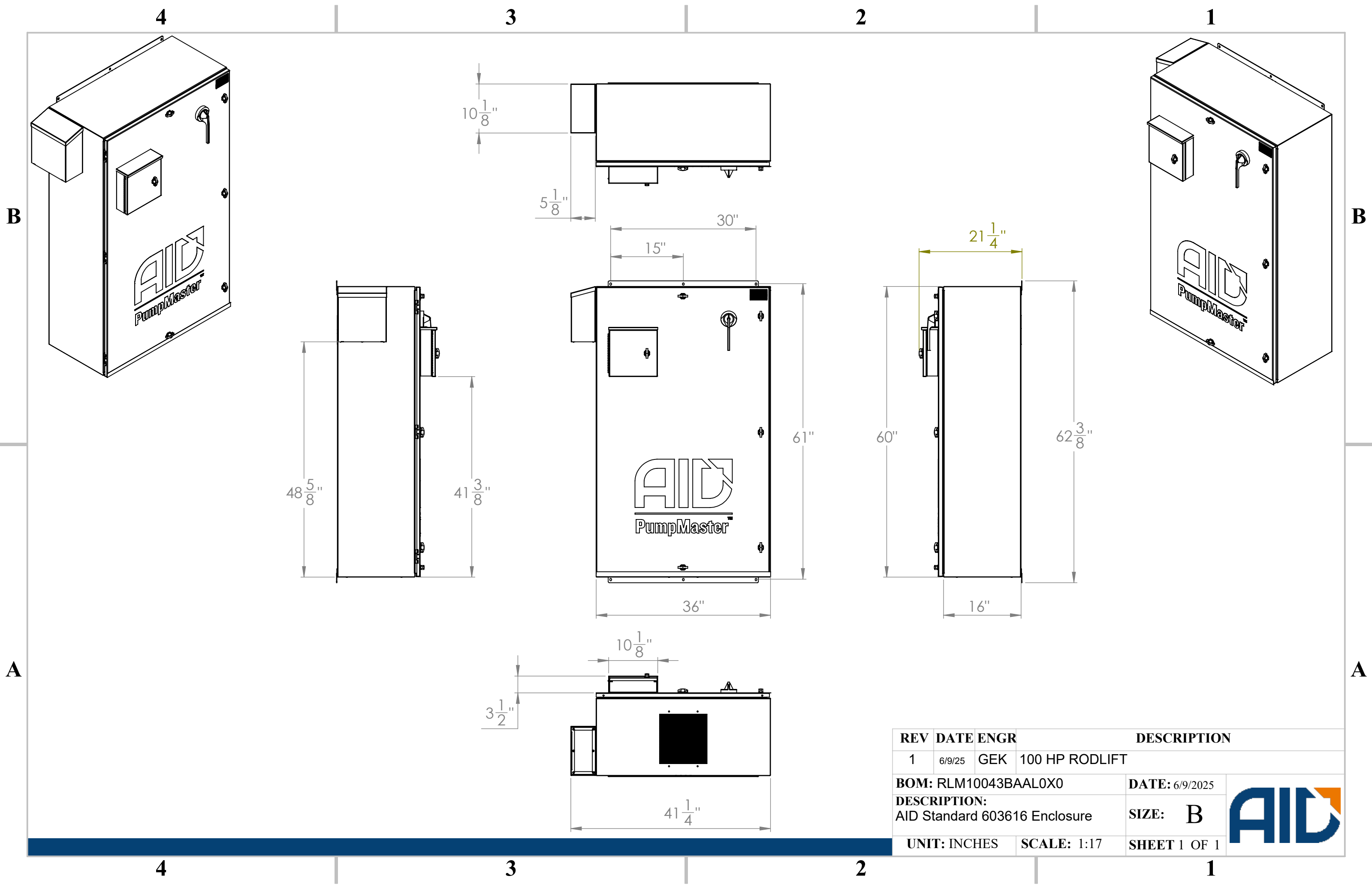
## Enclosure Materials

Enclosure Material	Carbon Steel
Enclosure Paint Spec	Powder Coated
Enclosure Dimensions	60 X 36 X 16
Weight (lbs)	TBD

## Available Package Options

Premium Surge Protection Device
Indicator Lights
UL 508A Listed
Power Protection Circuit
DriveLynx (SCADA) & Remote Monitoring (ARCC)
Floor Stand





REV	DATE	ENGR	DESCRIPTION
1	6/9/25	GEK	100 HP RODLIFT
BOM: RLM10043BAAL0X0			DATE: 6/9/2025
DESCRIPTION: AID Standard 603616 Enclosure			SIZE: B
UNIT: INCHES		SCALE: 1:17	SHEET 1 OF 1

