



# Jet Pump Package



BOM: JPM50043DAAL0UH

## VFD Package Specifications

Enclosure	NEMA 3R
Cooling Method	Air Cooled Filter Fans
Filtration	Replaceable
Input Voltage	460V +10%/-15% 3 Phase
Input Frequency	60 HZ
Min. Ambient Temp	-20F (-28C)
Panel Heater	Yes
Max. Ambient Temp	122F (50C)
Circuit Breaker Disconnect	LO/TO Compliant (Flanged)
Circuit Breaker Rating	1000A 35 KAIC Minimum
Line Side Reactor	3%
Surge Protection	UL 1449 40kA Surge Current
Control Power Transformer	1000VA
Display	5.7 OptiPump Jet Pump Controller VFD Keypad
Control	HOA, Speed Pot, 4-20mA
Heating Method	800 watt heater

## VFD Chassis Specifications

Brand	Fuji
Model	FRN500G1s-4U
Horsepower	500HP
Amperage/Altitude	650A/1000m w/o Derate
Humidity	Non-Condensing, 95% Max.
Overload Capacity	120% for 1 Min
Output Frequency	0.01 to 400 Hz
Analog Inputs	(2) 0-10vdc, (1) 4-20mA
Analog Outputs	(2) 4-20mA or 0-10V
Digital Inputs	(7)
Digital Outputs	(2) Relays, (4) Transistor
Communications	RS-485: Modbus RTU
Standards	UL, cUL, CE Listed

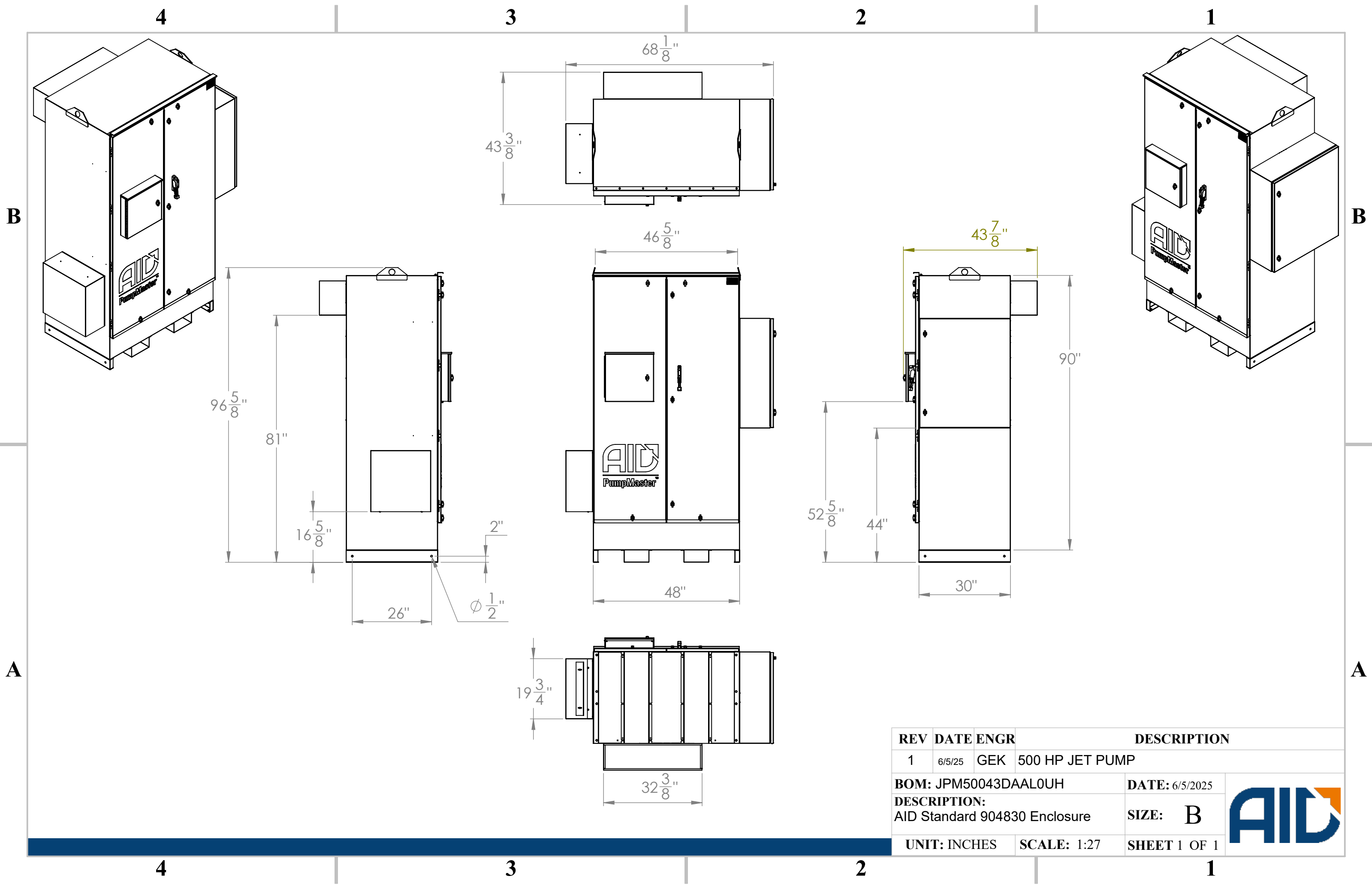
## Enclosure Materials

Enclosure Material	Carbon Steel
Enclosure Paint Spec	Powder Coated
Enclosure Dimensions	90 X 48 X 30
Weight (lbs)	TBD

## Available Package Options

Ethernet Expansion Cards
Premium Surge Protection Device
Indicator Lights
Low Voltage Wiring Hip box
Auxiliary VFD's or Starters
DriveLynx (SCADA) & Remote Monitoring (ARCC)
UL 508A Listed
Steel Skid
Call to learn about other available options





REV	DATE	ENGR	DESCRIPTION
1	6/5/25	GEK	500 HP JET PUMP
BOM: JPM50043DAAL0UH			DATE: 6/5/2025
DESCRIPTION: AID Standard 904830 Enclosure			SIZE: B
UNIT: INCHES		SCALE: 1:27	SHEET 1 OF 1

