



HPS Package



BOM: HPM70043DAAI0U0

VFD Package Specifications

Enclosure	NEMA 3R
Cooling Method	Air Cooled Filter Fans
Filtration	Replaceable
Input Voltage	460V +10%/-15% 3 Phase
Input Frequency	60 HZ
Min. Ambient Temp	-20F (-28C)
Panel Heater	Yes
Max. Ambient Temp	122F (50F)
Circuit Breaker Disconnect	LO/TO Compliant (Flange)
Circuit Breaker Rating	1200A 35 KAIC Minimum
Line Side Reactor	3%
Surge Protection	UL 1449 40kA Surge Current
Control Power Transformer	1500VA
Display	5.7 OptiPump HPS Controller VFD Keypad
Control	HOA, Speed Pot, 4-20mA
Heating Method	800 watt heater
Auxiliary Starter	40HP Charge Pump

VFD Chassis Specifications

Brand	Fuji
Model	FRN700G1s-4U
Horsepower	700HP
Amperage/Altitude	840A/1000m w/o Derate
Humidity	Non-Condensing, 95% Max.
Overload Capacity	120% for 1 Min
Output Frequency	0.01 to 400 Hz
Analog Inputs	(2) 0-10vdc, (1) 4-20mA
Analog Outputs	(2) 4-20MA or 0-10V
Digital Inputs	(7)
Digital Outputs	(2) Relays, (4) Transistor
Communications	RS-485: Modbus RTU/TCP
Standards	UL, cUL, CE Listed

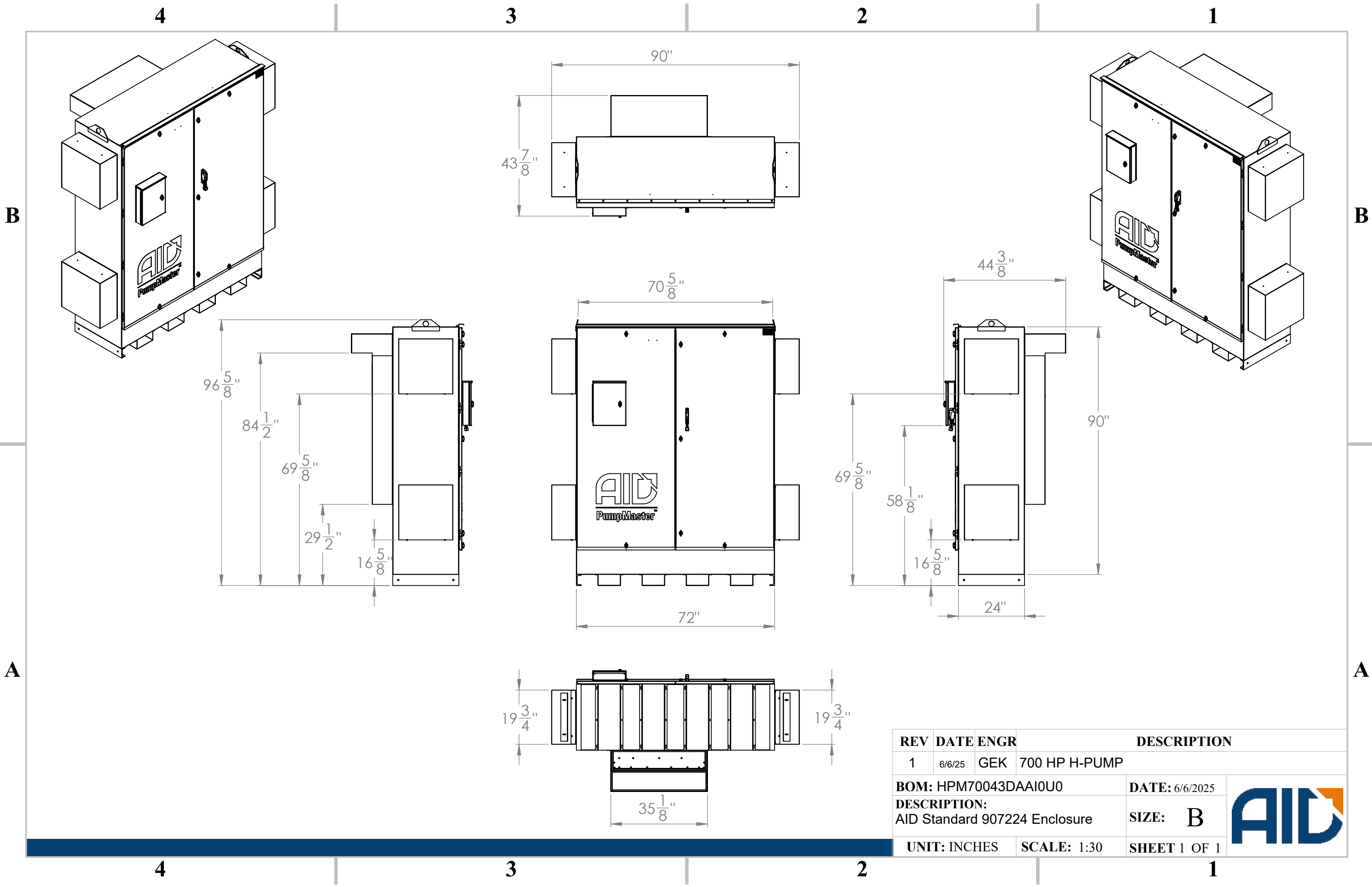
Enclosure Materials

Enclosure Material	Carbon Steel
Enclosure Paint Spec	Powder Coated
Enclosure Dimensions	90 X 72 X 24
Weight (lbs)	TBD

Available Package Options

Ethernet Expansion Cards
Premium Surge Protection Device
Indicator Lights
Low Voltage Wiring Hip box
Auxiliary VFD's or Starters
DriveLynx (SCADA) & Remote Monitoring (ARCC)
UL 508A Listed
Steel Skid
Call to learn about other available options





REV	DATE	ENGR	DESCRIPTION
1	6/6/25	GEK	700 HP H-PUMP
BOM: HPM70043DAAI0U0			DATE: 6/6/2025
DESCRIPTION: AID Standard 907224 Enclosure			SIZE: B
UNIT: INCHES		SCALE: 1:30	SHEET 1 OF 1

