



Gas Lift Package



BOM: GLM80043DAAL0YH

VFD Package Specifications

Enclosure	NEMA 3R
Cooling Method	Air Cooled Filter Fans
Filtration	Replaceable
Input Voltage	460V +10%/-15% 3 Phase
Input Frequency	60 HZ
Min. Ambient Temp	-20F (-28C)
Panel Heater	Yes
Max. Ambient Temp	122F (50C)
Circuit Breaker Disconnect	LO/TO Compliant (Flanged)
Circuit Breaker Rating	1200A 35 KAIC Minimum
Line Side Reactor	3%
Surge Protection	UL 1449 40kA Surge Current
Control Power Transformer	1500VA
Display	12.1 OptiPressure Controller VFD Keypad
Control	Off/Run, E-stop, 4-20mA
Heating Method	800-watt heater
Power Protection Circuit	Over/Under volt, Phase Rotation/Loss/Imbalance
Indicator Lights	3 panel status lights
Auxiliary Drive	5HP cooler drive
Auxiliary Starter	1.5HP Pre-Lube

VFD Chassis Specifications

Brand	Fuji
Model	FRN800G1s-4U
Horsepower	800HP
Amperage/Altitude	960A/1000m w/o Derate
Humidity	Non-Condensing, 95% Max.
Overload Capacity	120% for 1 Min
Output Frequency	0.01 to 400 Hz
Analog Inputs	(2) 0-10vdc, (1) 4-20mA
Analog Outputs	(2) 4-20mA or 0-10V
Digital Inputs	(7)
Digital Outputs	(2) Relays, (4) Transistor
Communications	RS-485: Modbus RTU/TCP
Standards	UL, cUL, CE Listed

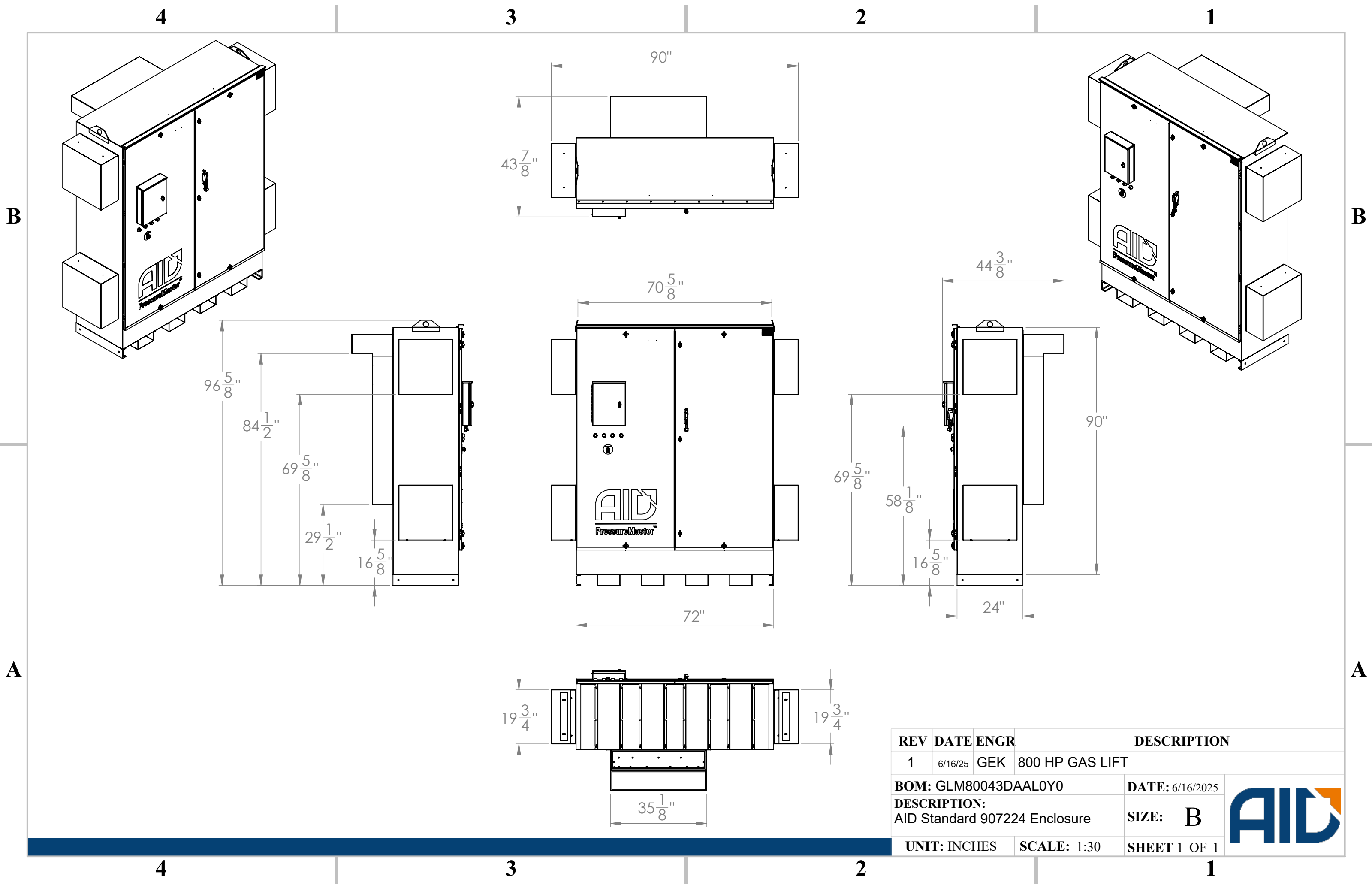
Enclosure Materials


Enclosure Material	Carbon Steel
Enclosure Paint Spec	Powder Coated
Enclosure Dimensions	90 X 72 X 24
Weight (lbs)	TBD

Available Package Options

Communication Expansion Cards
Premium Surge Protection Device
UL 508A Listed
Low Voltage Wiring Hip box
Steel Skid
DriveLynx (SCADA) & Remote Monitoring (ARCC)





REV	DATE	ENGR	DESCRIPTION	
1	6/16/25	GEK	800 HP GAS LIFT	
BOM: GLM80043DAAL0Y0			DATE: 6/16/2025	
DESCRIPTION: AID Standard 907224 Enclosure			SIZE: B	
UNIT: INCHES			SCALE: 1:30	
			SHEET 1 OF 1	