

Premium Efficiency Motor

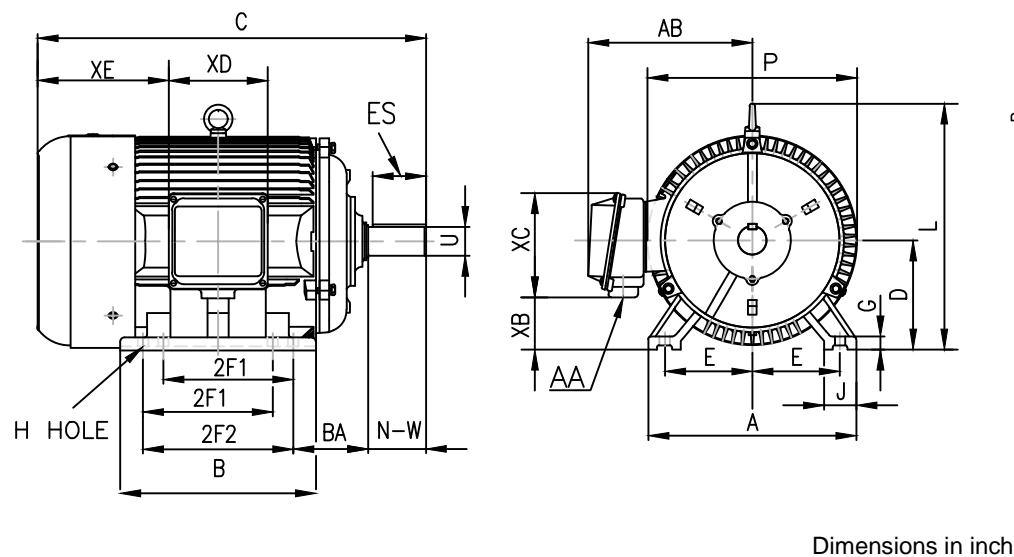
TM1002TPP

Voltage	<u>208-230/460</u>	Hz	<u>60</u>	Encl	<u>TEFC</u>	Duty Cycle	<u>Continuous / S1</u>
Design	<u>B</u>	Ins.Cl.	<u>F</u>	Ambient	<u>40°C</u>	IP	<u>55</u>
Altitude	<u>3300FT</u>	S.F.	<u>1.15</u>	Rotation	<u>CW/CCW</u>	Mounting	<u>F1/F2</u>

HP	RPM	Frame	Amps 208~230/460V	KVA Code	P.F.	Rated Torque	Locked Rotor Torque	Breakdown Torque	Full Load Temp. Rise
100	3570	405TS	244.82~221.4/110.7	G	0.9	146.7 lb.ft.	190%	275%	80K

Slip %	Locked Rotor Amp	No Load Current	Moment of Inertia	Bearing		Regrease Interval		Max Time Locked Rotor	Efficiency %	
				DE	ODE	DE	ODE		FL	3/4L
0.8	1450/725	64.4/32.2	19.69 lb.ft. ²	6313	6313	2800 Hrs	2800 Hrs	15 Sec	94.1	94.05

Inverter Duty	Hazardous Location / Temp. Code	Leads / Connect	Shaft Material	Approx Weight
10:1 CT 20:1 VT	Class I Division 2 / T3B	12 / Δ	1045 Carbon Steel	1077 lbs



Rating for 50 Hz Application	
HP	100
RPM	2970
Volt	200/400
S.F.	1.0

Connection	
Low Voltage	High Voltage

A	B	C	D	G	J	P	L	AB
19.3	17.9	35.3	10	1.1	3.1	21.4	20.7	18.3

Mounting					Key		Keyset	Shaft Extension		Terminal Box				
E	2F1	2F2	H	BA	S	ES	R	N-W	U	AA	XB	XC	XD	XE
8	12.25	13.75	0.81	6.62	0.5	2.78	1.845	4.25	2.125	3	5.1	11.7	9.8	12.7

*Data may change without notice.